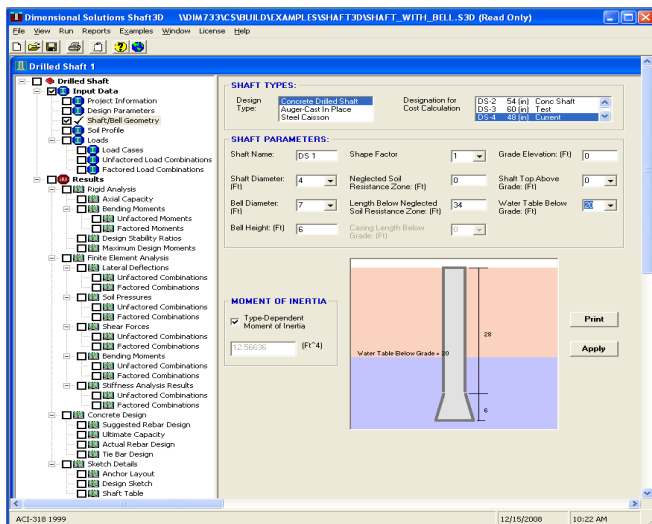


## Shaft Design in Seconds

If you would like to complete foundation designs of piles or drilled shafts in seconds, you will definitely want to try Shaft3D™. In an easy-to-use, Windows™-based graphical user interface, Shaft3D will complete your shaft type foundation designs in seconds in a seamless, integrated design environment.

### Some of the features of Shaft3D are:



- Completes both **geotechnical and structural analysis**, providing you with an integrated design environment to complete drilled shaft (drilled pier or caisson) design.
- Completes both **axial and lateral capacity analysis** with extensive user specified parameters so that you can meet your company or client standards.
- Provides a **graphical way to enter your soil profile** enabling you to visually see the various soil layers with its soil properties.
- Determines **pier longitudinal and tie**

**bar configurations** in accordance with various concrete design codes for drilled shafts and auger cast-in-place piles allowing you to obtain and provide a complete design solution.

- Computes **deflections, soil pressures, shear forces and bending moments** at various depths along the length of the shaft giving you a complete view of the shaft behavior to applied loads for the specified soil conditions.
- Generates a **detailed design sketch and reports** of the completed shaft design in various formats enabling you to view the results in seconds.

